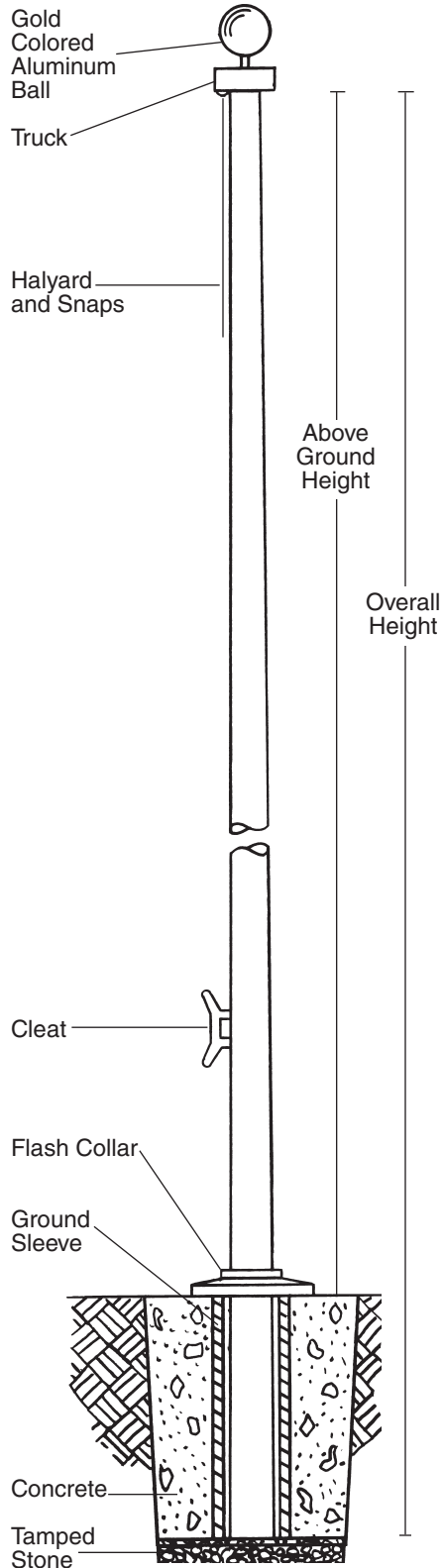
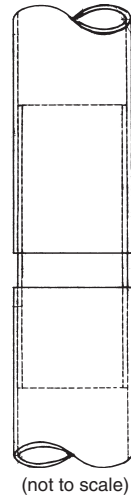


# Fiberglass Flagpoles

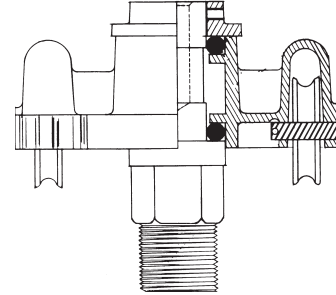
Fiberglass  
Commercial Ground Set  
External Halyard  
Flagpoles 20 X - 80 X



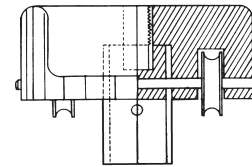
**Field Splice Detail**



**Aluminum Revolving External Truck**



**Fiberglass Stationary External Truck**



Poles 50' and up are equipped with an internal field splice which is cemented and pinned with stainless pins to the bottom section. The top section simply slides over the self-aligning splice for easy field assembly.

Model Number	PLP 20 X	PLP 25 X	PLP 30 X	PLP 35 X	PLP 40 X*	PLP 50 X	PLP 60 X	PLP 70 X	PLP 80 X*
Above Ground Height	20'	25'	30'	35'	39'	50'	60'	70'	80'
Overall Height	23'	28'	33'	39'	43'	55'	66'	77'	88'
Butt Diameter	5.75"	6"	6.75"	7"	7"	10"	10.5"	16"	16.5"
Top Diameter	3"	3"	3"	3"	3"	4.5"	4.5"	7"	7"
Pole Weight (lbs.)	45	54	69	96	118	284	500	875	1075
Shipping Weight (lbs.)**	95	107	131	172	194	559	710	1224	1510
Ground Sleeve I.D.	8"	8"	8"	8"	8"	14"	14"	20"	20"
Ground Sleeve Length	3'	3'	3'	4'	4'	5'	6'	7'	8'
Cleat	8.5" Nylon	8.5" Nylon	8.5" Nylon	8.5" Nylon	8.5" Nylon	10" Alum.	10" Alum.	10" Alum.	10" Alum.
Ball Diameter	5"	5"	6"	6"	8"	10"	10"	14"	14"
Halyard	#10	#10	#10	#10	#10	#12	#12	#12	#12
Flash Collar	16"	16"	16"	16"	16"	23"	23"	30"	30"
Truck	F/G	F/G	F/G	F/G	F/G	Rev. Alum.	Rev. Alum.	Rev. Alum.	Rev. Alum.
Snaps	Brass Swivel	Brass Swivel	Brass Swivel	Brass Swivel	Brass Swivel	S/S Swivel	S/S Swivel	S/S Swivel	S/S Swivel
Standard Flag Size	4x6	4x6	5x8	5x8	6x10	8x12	10x15	12x18	12x18

\* This pole is equipped with a ground set extension which fits into the butt of the pole. The entire assembly then slides into the ground sleeve. Detailed instructions come with each pole.  
\*\* Shipping weight includes weight of packaging and fittings.

# SPECIFICATIONS

Provide a Fiberglass Reinforced Plastic (FRP) Ground Set Flagpole Model # \_\_\_\_\_X as manufactured by PLP Composite Technologies, Inc., Fitzwilliam, NH 03447.

The flagpole shall have an overall length of \_\_\_\_\_ feet, with an above ground height of \_\_\_\_\_ feet. The butt diameter shall be \_\_\_\_\_ inches and the top diameter \_\_\_\_\_ inches. The pole weight shall be \_\_\_\_\_ lbs. with a total shipping weight of \_\_\_\_\_ lbs.

The flagpole shall be manufactured of fiberglass woven roving and polyester resin. Load calculations shall be based on AASHTO and NAAMM standards with the pole designed with a two to one safety factor for 120 m.p.h. winds, unflagged.

The flagpole shall have an ENTASIS taper.

The pole shall be sanded smooth and coated with a high gloss UV inhibited finish.

The pole shall be absent of any vertical mold seams.

The color of the flagpole shall be:

Standard white, bronze, black, or other, as specified \_\_\_\_\_. (Select one)

The flagpole shall be equipped with PLP standard fittings:

- A \_\_\_\_\_" gold colored aluminum ball
- # \_\_\_\_\_ polyester halyard
- \_\_\_\_\_" \_\_\_\_\_ cleat
- \_\_\_\_\_" composite flash collar
- \_\_\_\_\_' x \_\_\_\_\_" composite ground sleeve
- Flag Snaps
  - Brass swivel with vinyl covers (20X-40X), or
  - Stainless Steel swivel (50X-80X)
- Truck (Pulley Assembly)
  - Double sheave fiberglass stationary truck with s/s securing screws (20X-40X), or
  - Double sheave aluminum revolving truck (50X-80X)

EXCEPTIONS: \_\_\_\_\_

\_\_\_\_\_

PROJECT: \_\_\_\_\_

LOCATION: \_\_\_\_\_

DATE: \_\_\_\_\_