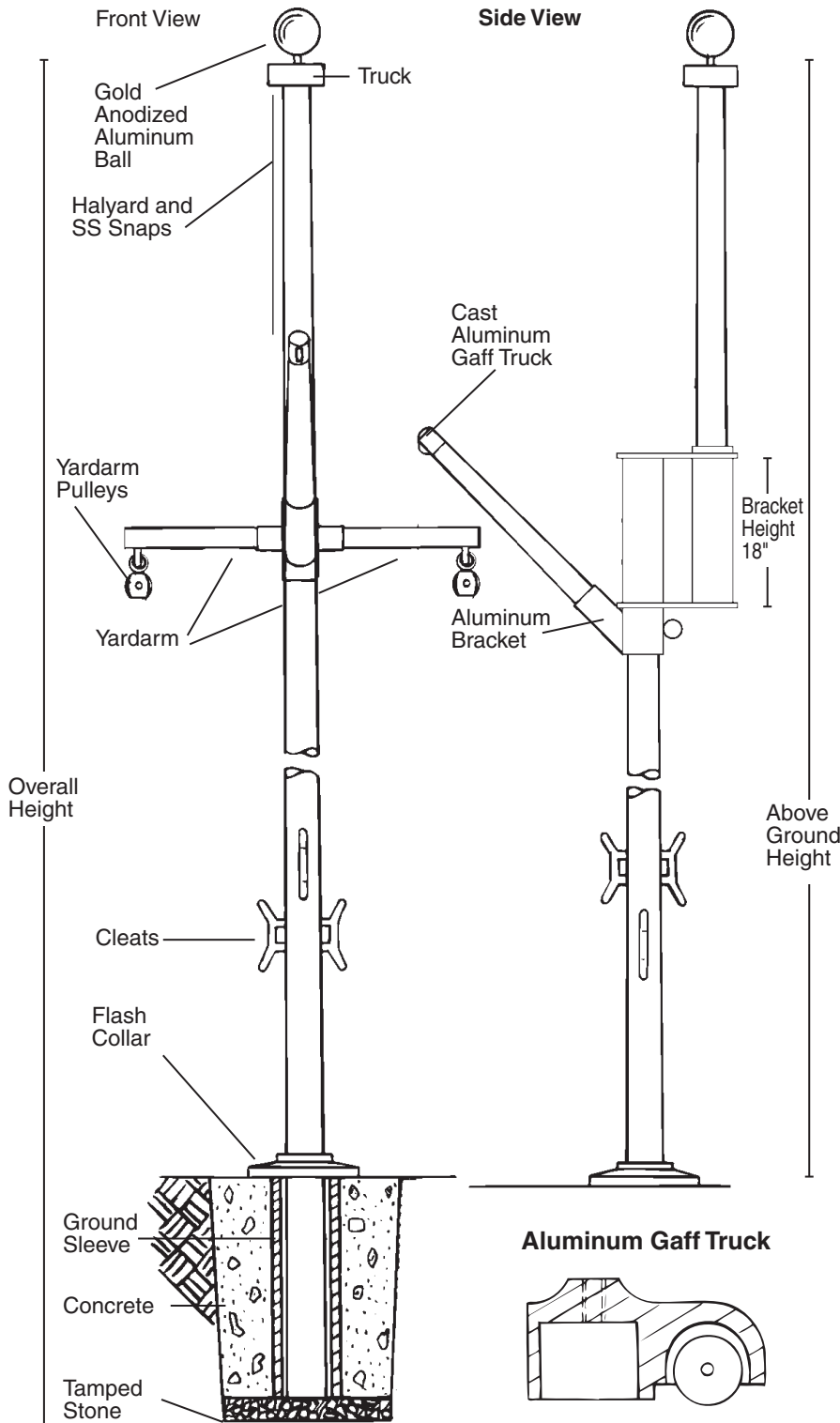
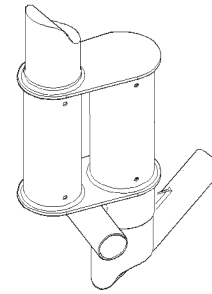


# Fiberglass Flagpoles

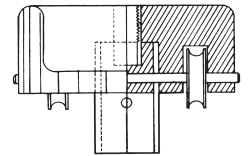
Nautical Double Masted Flagpole with Yardarm/Gaff 25' to 40'



Aluminum Powder Coated Bracket



Fiberglass Stationary External Truck



Nautical Double Masted Flagpole with Yardarm/Gaff 25' to 40'

	25NDM-YAG	30NDM-YAG	35NDM-YAG	40NDM-YAG
<b>Above Ground Height</b>	25'	30'	35'	40'
<b>Burial Depth</b>	3'	4'	4'	5'
<b>Top Section</b>				
Length	10' 9"	12' 9"	14' 9"	16' 9"
Top Diameter	3"	3"	3"	3"
Butt Diameter	5"	5"	5.5"	5.5"
Burgee	3x5	4x6	5x8	6x10
<b>Bottom Section</b>				
Overall Length	18' 9"	22' 9"	25' 9"	29' 9"
Bury Depth	3'	4'	4'	5'
Top Diameter	5.75"	5.75"	7.4"	7.4"
Butt Diameter	6.8"	7"	9.1"	9.2"
<b>Yardarm</b>				
Length	8'	9.5'	11.5'	13'
End Diameter	3"	3"	3"	3"
Center Diameter	4"	4"	4.5"	4.5"
Standard Flags	3x5	4x6	4x6	5x8
<b>Gaff</b>				
Length	6.5'	7.5'	9'	10'
Tip Diameter	3"	3"	3"	3"
Butt Diameter	4"	4"	4.5"	4.5"
Standard Flags	4x6	5x8	5x8	6x10
<b>Ground Sleeve</b>	3' x 8"	4' x 8"	4' x 11"	5' x 11"
<b>Fittings</b>				
Gold Ball	6"	6"	8"	8"
Truck	FG	FG	FG	FG
Halyard Size	#10	#10	#10	#10
Cleat (powder coated)	8" AL	8" AL	8" AL	8" AL
Snaps (stainless steel)	3.25"	3.25"	3.25"	3.25"
Flash Collar	16"	16"	23"	23"
<b>Pole Weight</b>	87	121	171	227
<b>Pole Weight (w YA/G)</b>	125	166	222	285
<b>Shipping Weight</b>	190	240	324	392

Shipping Weight includes weight of packaging and fittings

# SPECIFICATIONS

Provide a Fiberglass Reinforced Composite (FRC) Ground Set Flagpole Model # \_\_\_\_\_ NDM-YAG as manufactured by PLP Composite Technologies, Inc., Fitzwilliam, NH 03447.

The flagpole shall have a mounting height of \_\_\_\_\_' and \_\_\_\_\_' below grade for an overall length of \_\_\_\_\_'.

The flagpole shall be a double masted design with the top section being \_\_\_\_\_' with a top diameter of \_\_\_\_\_" and a bottom diameter of \_\_\_\_\_". The bottom section shall be \_\_\_\_\_' in length, with a top diameter of \_\_\_\_\_" and a butt diameter of \_\_\_\_\_". The two pole sections, as well as the yardarm and gaff, shall be secured by an aluminum powder coated bracket. The flagpole shall have a total weight of \_\_\_\_\_ lbs. and a shipping weight of \_\_\_\_\_ lbs.

The yardarm shall have an overall length of \_\_\_\_\_'. The diameter at the center of the yardarm shall be \_\_\_\_\_" and will taper to each end to a diameter of \_\_\_\_\_". The gaff shall have an overall length of \_\_\_\_\_'. The butt diameter shall be \_\_\_\_\_" and the tip diameter \_\_\_\_\_".

The flagpole, yardarm, and gaff shall be manufactured of fiberglass woven roving and polyester resin with 75% of the reinforcing fibers oriented to the axial plane for maximum stiffness and 25% in the radial plane for required hoop strength. Load calculations shall be based on AASHTO and NAAMM standards designed for 150 m.p.h. winds, unflagged with a 1.3 gust factor.

The flagpole, yardarm, and gaff shall have an ENTASIS taper and shall be void of any vertical mold seams.

The flagpole, yardarm and gaff shall be sanded smooth and coated with a high gloss Aliphatic Polyurea coating system which provides, UV protection and weatherability.

The color of the flagpole, yardarm, and gaff shall be: Standard white, black, bronze (select one).

The shaft, yardarm and gaff weight shall be \_\_\_\_\_ lbs. and the total shipping weight shall be \_\_\_\_\_ lbs.

The flagpole is equipped with:

- A \_\_\_\_\_" gold anodized aluminum ball
- # \_\_\_\_\_ polyester halyard
- Powder coated aluminum cleat
- A \_\_\_\_\_" composite flash collar
- \_\_\_\_\_' x \_\_\_\_\_" fiberglass ground sleeve
- Stainless steel swivel snaps/covers
- Stationary external truck

The yardarm and gaff are equipped with:

- Yardarm/gaff bracket painted to match color of pole (2-piece bracket)
- \_\_\_\_\_ yardarm pulleys
- Cast aluminum gaff truck
- # \_\_\_\_\_ polyester halyards (2 yardarm & 1 gaff)
- Powder coated aluminum cleats (3 to a set)
- Stainless steel swivel snaps/covers (2 for each side of yardarm & 2 for gaff)

EXCEPTIONS: \_\_\_\_\_

\_\_\_\_\_

PROJECT: \_\_\_\_\_

LOCATION: \_\_\_\_\_

DATE: \_\_\_\_\_

## **PLP Composite Technologies, Inc.**

57 Creamery Road • PO Box 429 • Fitzwilliam, NH 03447 • Tel: 603-585-9100 • Fax: 603-585-3470 • www.plpcomp.com